

# GIANTB

## Hydraulic Breaker



**Giant Hydraulic Tech Co., Ltd. China**

Hi-Tech Industrial Development District, Maanshan Anhui, China

**Tel** +86-555-2109695 **Fax** +86-555-2229240 **E-mail** giant@giantchina.com

**Service Tel: 400-8878545**

[www.giantchina.com](http://www.giantchina.com)



**Giant Hydraulic Tech**





Giant Hydraulic Tech

# Brief Introduction



Giant Hydraulic Tech Co., Ltd. a National Hi-tech Enterprise, is specializing in developing and applying new hydraulic technology. At present it covers 60,000 m<sup>2</sup> with the building area of 25,000 m<sup>2</sup>, with RMB200 millions total capital and more than 100 sets of various precise processing machines. It is a medium-sized manufacturing enterprise with high modernized productive force and R&D capability.

The leading products are Hydraulic Breaker, Demolition Robot and Rock-breaker station, with 3 inventions patents and 11 utility patents and ISO9001, ISO14001 and CE certificate. Giant Hydraulic Breakers and Demolition Robot, as the national new products, are included in the "National Main Torch Plan".

With the developing concept that "technology based and sustainable innovation", Giant is developing its own features in the field of hydraulic demolition machines, and promoting high efficient products continuously which enjoy a good reputation and are welcomed by the world market.



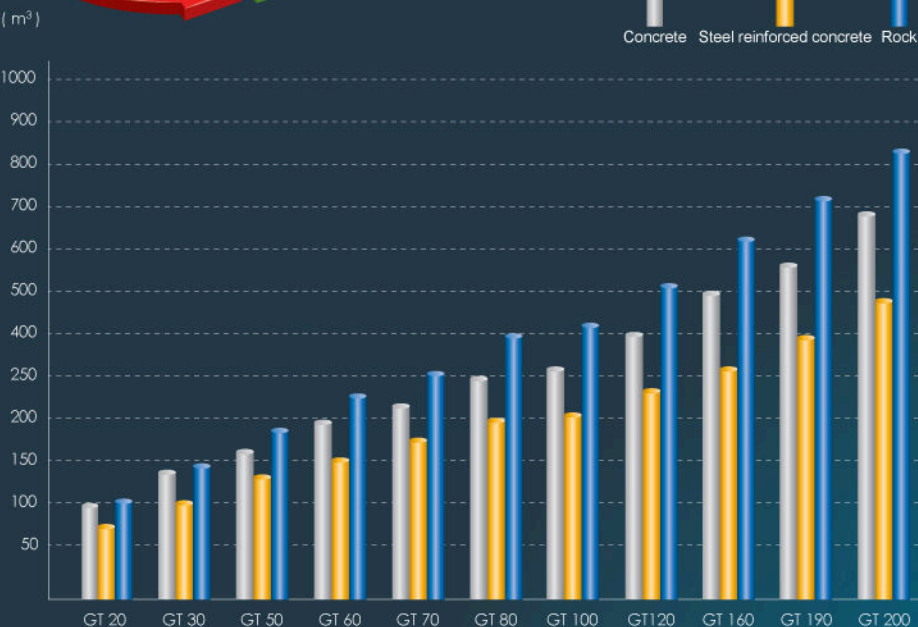
# GIANTB Series Hydraulic Breaker

## Specification and Naming:



## Innovative Technology

The institutor of occupation standard



Side

Silence

Top



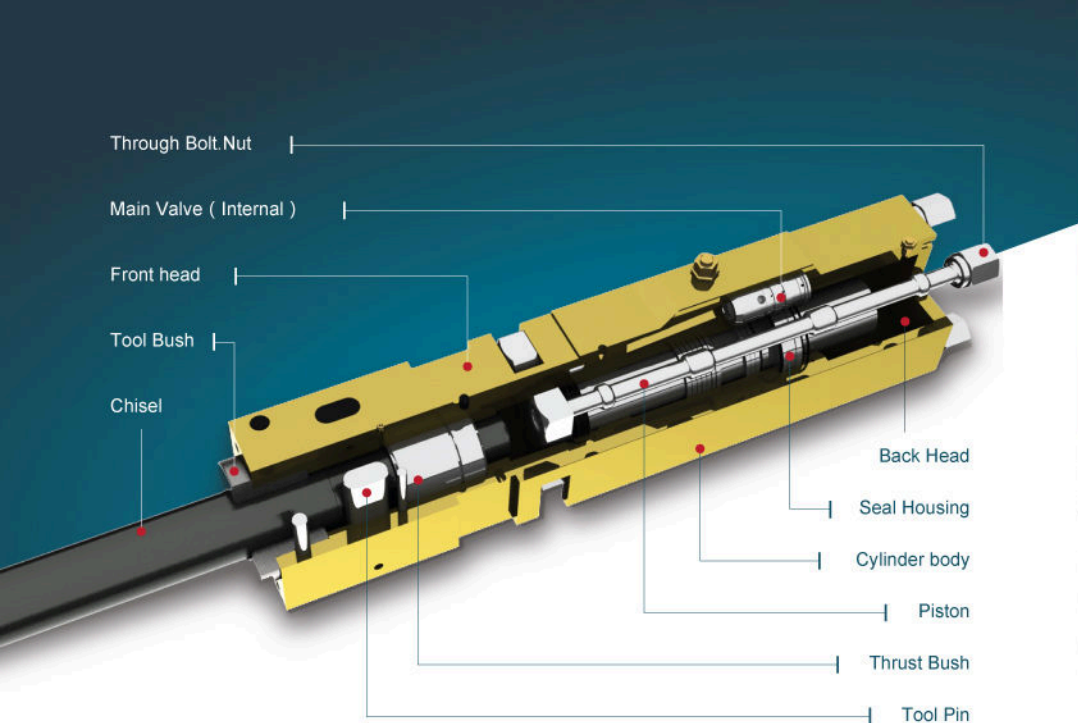


The main parameters of internal valve breakers

Model	Dia. of tool (mm)	Weight of tool (kg)	Weight (kg)	Operating Flow (l/min)	Operating Pressure (bar)	Impact Rate (bpm)	Applicable Excavator	
							Bucket capacity (m³)	Weight (ton)
08	40	4	81	15~30	90~120	800~1400	0.07以下	0.8~2.5
			137					
			91					
10	45	6	102	20~40	90~120	700~1200	0.3~0.1	1.2~3.0
			195					
			122					
20	53	9	140	25~50	90~120	600~1200	0.06~0.2	2.5~4.5
			260					
			153					
30	70	19	264	40~70	110~140	500~900	0.15~0.30	4~7
			390					
			330					
40	75	24	345	50~90	120~150	400~800	0.2~0.35	6~9
			480					
			458					
50	85	32	493	60~100	130~160	400~800	0.25~0.5	7~14
			648					
			591					
60	100	57	736	80~110	150~170	350~700	0.4~0.6	11~16
			917					
			880					
75	125	98	1484	90~120	150~170	350~650	0.5~0.75	14~20
			1415					
			1578					
90	140	142	1890	120~180	160~180	350~500	0.85~1.2	19~25
			1947					
			2123					
150	155	183	2841	180~240	160~180	350~450	1.2~1.6	28~35
			2676					
			2935					
200	175	263	3600	210~290	160~180	200~350	1.4~2.0	40~55
			3532					
			3684					

Side Silence Top

(Different colors stand for different models)

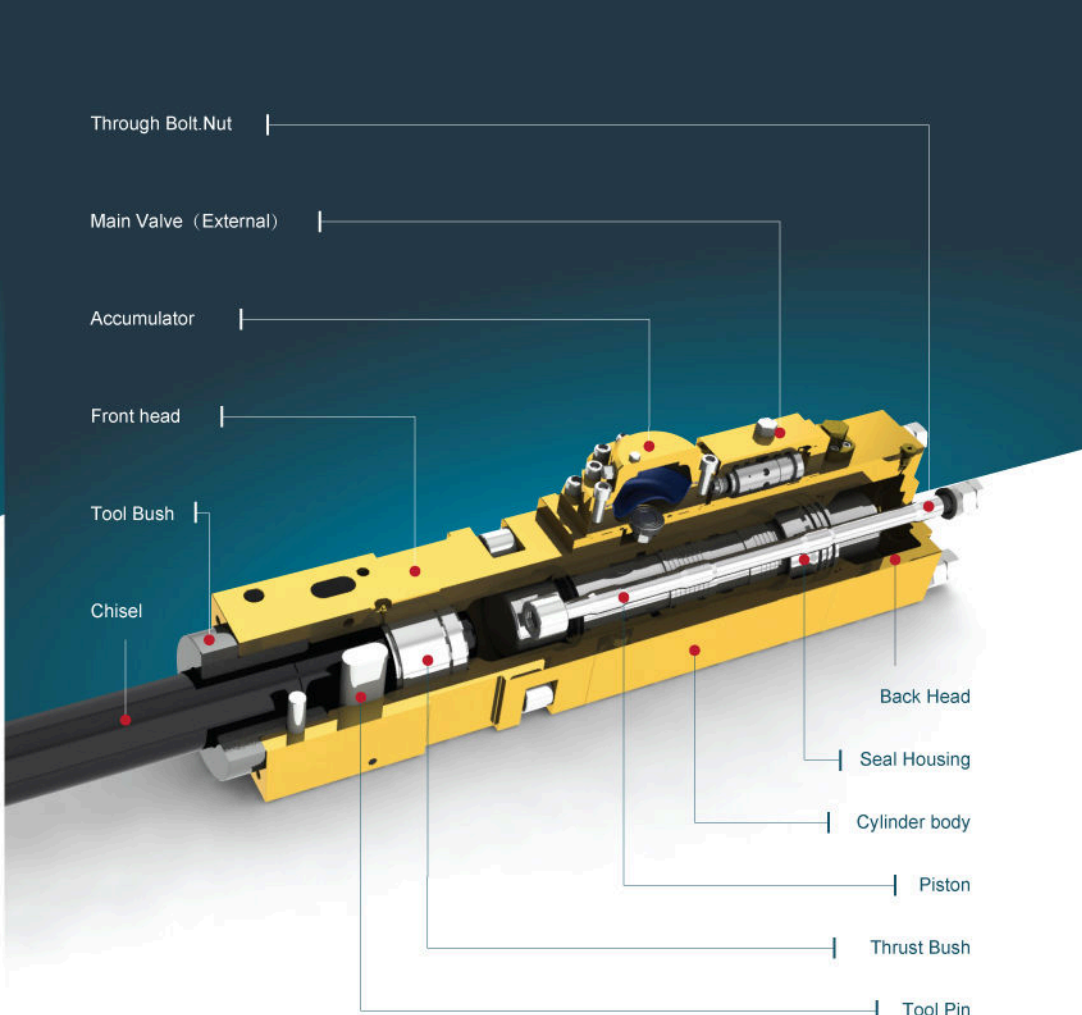


The main parameters of external valve breakers

Model	Dia. of tool (mm)	Weight of tool (kg)	Weight (kg)	Operating Flow (l/min)	Operating Pressure (bar)	Impact Rate (bpm)	Applicable Excavator	
							Bucket capacity (m³)	Weight (ton)
70	120	89	1374	90~120	150~170	350~650	0.5~0.7	12~18
			1358					
			1420					
80	135	131	1633	100~150	160~180	350~600	0.6~1.0	18~23
			1712					
			1890					
100	140	140	1887	150~190	160~180	350~500	0.85~1.2	20~28
			2018					
			2121					
130	150	164	2352	150~190	160~180	350~500	1.1~1.5	25~32
			2145					
			2282					
160	155	197	2923	190~250	160~180	300~450	1.2~1.6	30~40
			2691					
			3058					
190	160	200	3075	190~250	160~180	300~450	1.3~1.8	35~45
			2791					
			3007					

Side Silence Top

(Different colors stand for different models)





# Precision Casting

Showing the professional power



Grinding Machine Workshop



Heat Treatment



Machine Center



Finish Equipment Workshop



Cutting Machine Center

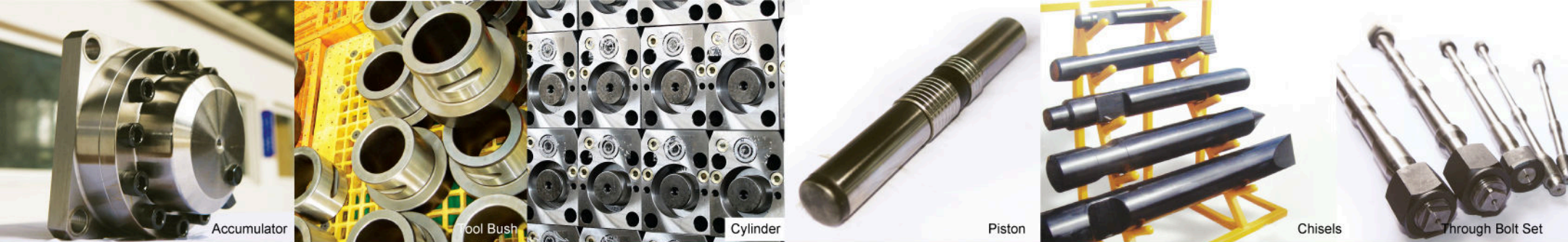


Testing Center



Discussing and Researching





Accumulator

Tool Bush

Cylinder

Piston

Chisels

Through Bolt Set

Keep exceeding the customers' expectation  
**Value Embodiment**

## The features of spare parts

- ◆ Choose the high quality special alloy steel, precise digital control machining and special multi-heat treatment.
- ◆ Excellent composite mechanical function, high hardness and high impacting toughness.
- ◆ Long life, high reliability, the wear resistant chisels are not easy to be broken.
- ◆ Suit various working conditions, embody the high cost performance perfectly.



Tool Pin



Diaphragm



O-Ring



Buffer Pad



Automatic Lubricating Pump



High-pressure Hoses



# The Selling Network in China

Gt

Regional Marketing Service

▲

Agent

●

Sales territory



# International Sales Network

●

Agent

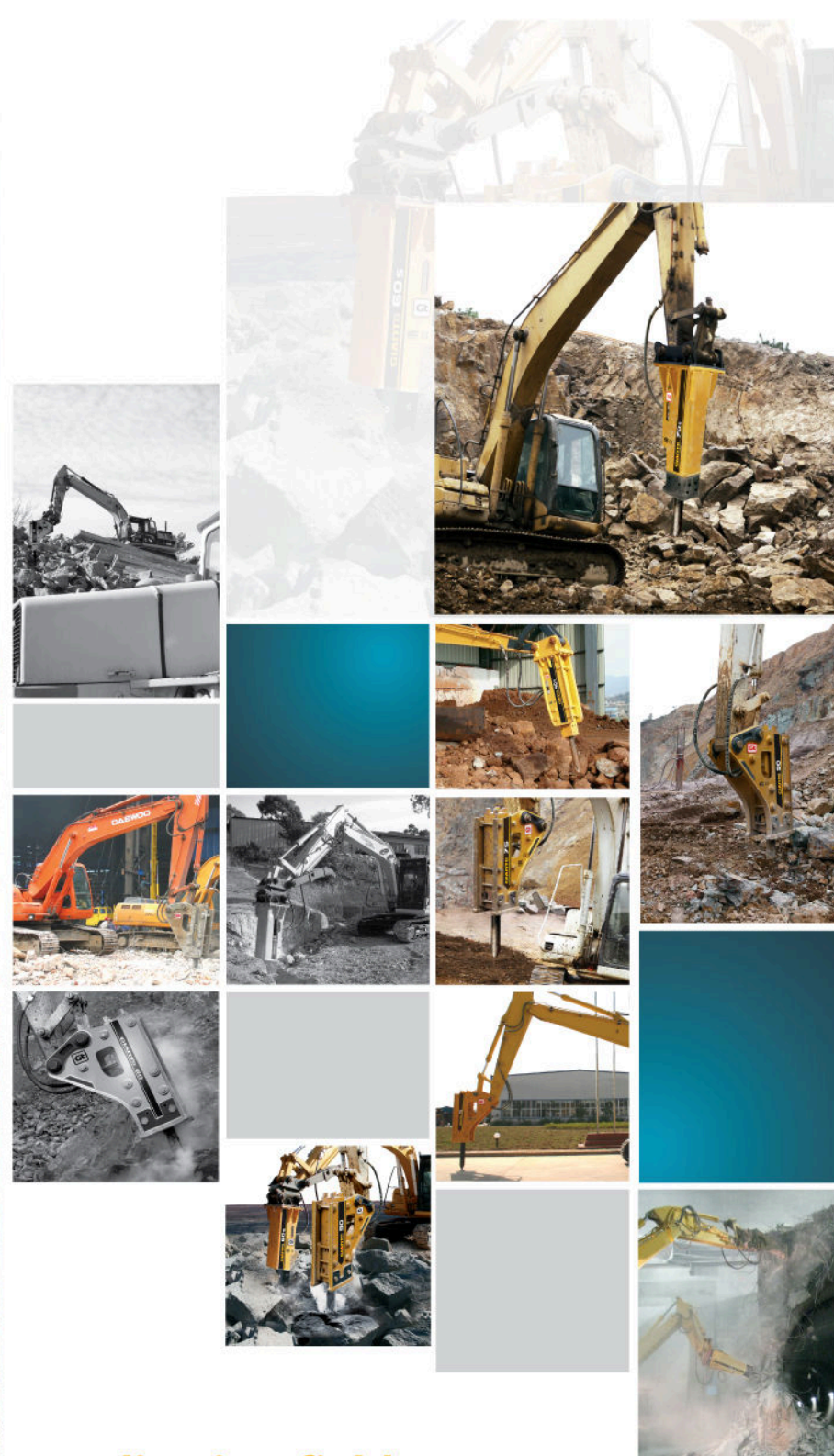
○

Sales territory





Innovation leads to development  
**Specialty leads to legend**



## Application fields

1. Mining-cutting into a mountain for quarrying, tunneling, rock breakage, grizzly, slotting, piling etc.
2. Metallurgical industry-the cleaning of ladle and slag, rock breakage in many steelworks.
3. Railway- cutting into a mountain for paving, the demolition of road and bridge, the vibroing and tamping of roadbed etc.
4. Highway-the breaking and repairing of road, roadbed tamping, trenching, piling etc.
5. Municipal works-water undertaking, gas corporation, the construction of electri-installing company.
6. Development of architecture and building- the demolition of old building, reinforced concrete breaking, foundation tamping, piling etc.
7. Foundry industry- sand mold vibroing, tamping etc.
8. Ship repairing-the eliminating of rust, mussels and hydraulic rivet etc.