

## KEFID HJ HIGH EFFICIENCY JAW CRUSHER



## 一、PRODUCT CHARACTER

### ◆Product Advantages

**1. High capacity.** To optimize the movable jaw's tracks and crushing cavity, it gives the HJ jaw higher capacity with the same motor power.

**2. High stable performance.** To optimize the complete design and the weight of the balance part, it gives the most accurate balance weight of the fly wheel, drive wheel. In these reasons, it has solved the normally vibrating problems and has a higher stable performance compared with the regular jaw crusher.

**3. Heavy duty.** The heat-treatment main shaft, ex-large bearings, E type main frame and the labyrinth sealing system makes the HJ jaw crusher stronger, more reliable and heavy duty.

**4. Easy to operate and maintenance.** The side plates fixed system adopts the advanced bolts type, easy to change the side plate. Also it has improvements in adjusting the discharging opening and changing the toggle plate.

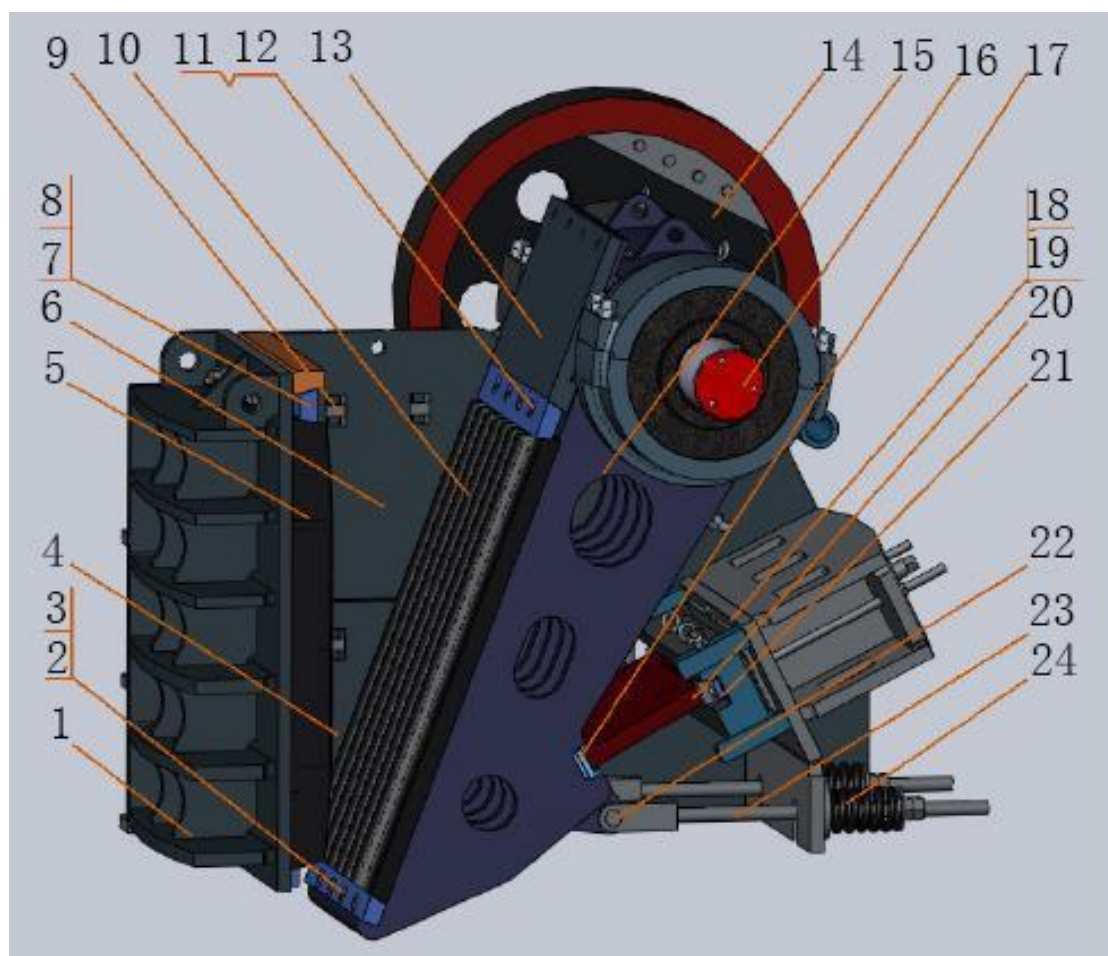
**5. Widely application fields.** HJ jaw crusher has compact structure, and it takes smaller working area compared to the regular jaw crusher. It is widely used in the mines, mineral process and quarry.

## 二、TECHNICAL DATA

Model Item	HJ98	HJ110	HJ125
Feed opening (mm)	650×980	800×1100	950×1250
Max feed size (mm)	560	660	800
Discharging opening (mm)	75-175	100-200	125-225
Capacity (t/h)	110-350	215-510	280-650
Eccentric shaft speed (r/min)	270	260	230
Motor power (kW)	90/110	110/132	132/160
Overall dimension (mm)	2470×2000×2180	2875×2472×2530	3320×2600×3120

### 三、 MAIN STRUCTURE AND WORKING PRINCIPLE

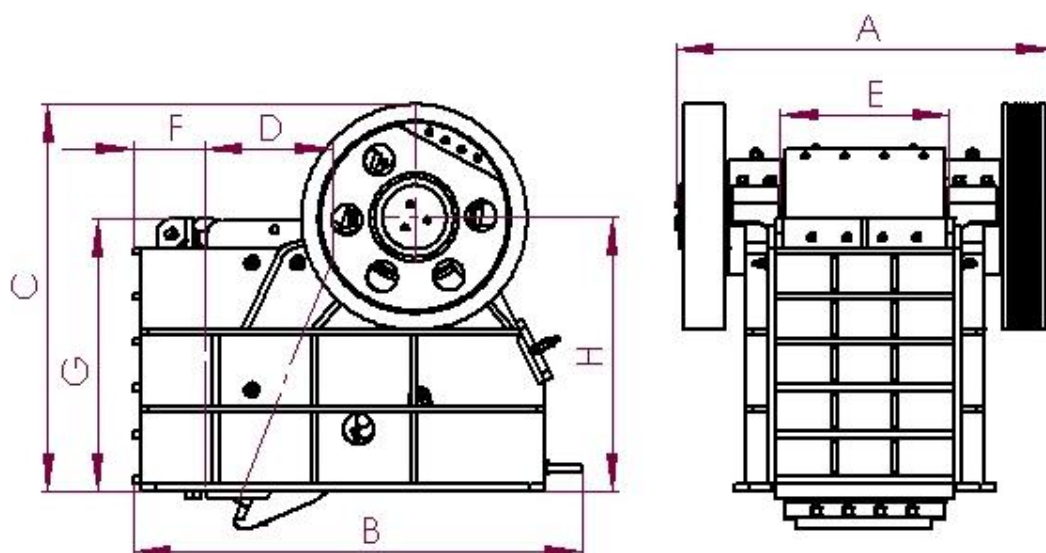
#### Main structure



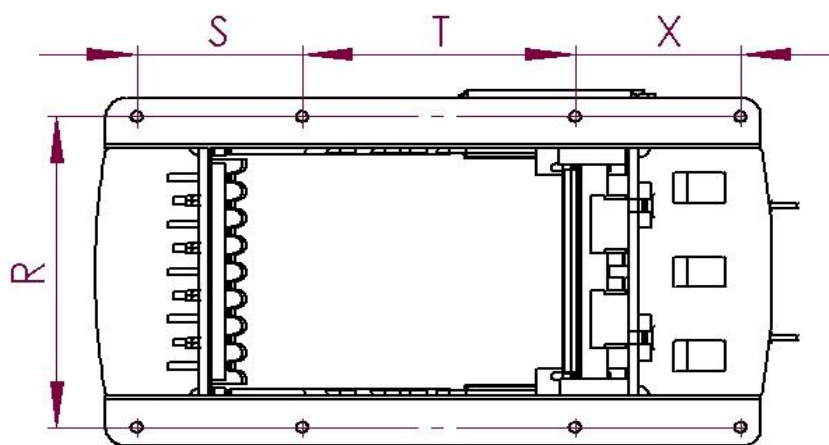
- |                                       |   |
|---------------------------------------|---|
| 1. Main frame                         | 2. Bottom fixed steel for movable jaw plate |
| 3. Bottom bolts for movable jaw plate | 4. Bottom side plate                        |
| 5. Fixed jaw plate                    | 6. Side plates                              |
| 7. Bolts for fixed jaw plate          | 8. Fixed steel for fixed jaw plate          |
| 9. Bolts for side plates              | 10. Movable jaw plate                       |
| 11. Upper bolts for movable jaw plate | 12. Upper fixed steel for movable jaw plate |
| 13. Protect plate for movable jaw     | 14. Fly wheel part                          |
| 15. Movable jaw                       | 16. Eccentric shaft                         |
| 17. Toggle plate jacket 1             | 18. Discharging adjust steel plate 1        |
| 19. Discharging adjust steel plate 2  | 20. Toggle plate                            |
| 21. Toggle plate jacket 2             | 22. Pin                                     |
| 23. Draw bars                         | 24. Springs                                 |

#### 四、OVERALL DIMENSION

##### OVERALL VIEW



##### ANCHOR BOLTS



S	A	B	C	D	E	F	G	H	R	S	T	X
M	(mm)	(mm)	(mm)	(mm)	(mm)	(mm)	(mm)	(mm)	(mm)	(mm)	(mm)	(mm)
HJ98	2000	2470	2180	650	980	135	1380	1555	1280	910	910	0
HJ110	2472	2875	2530	800	1100	128	1590	1790	1510	720	1650	0
HJ125	2600	3320	3120	950	1250	130	1800	2084	1640	800	1320	800