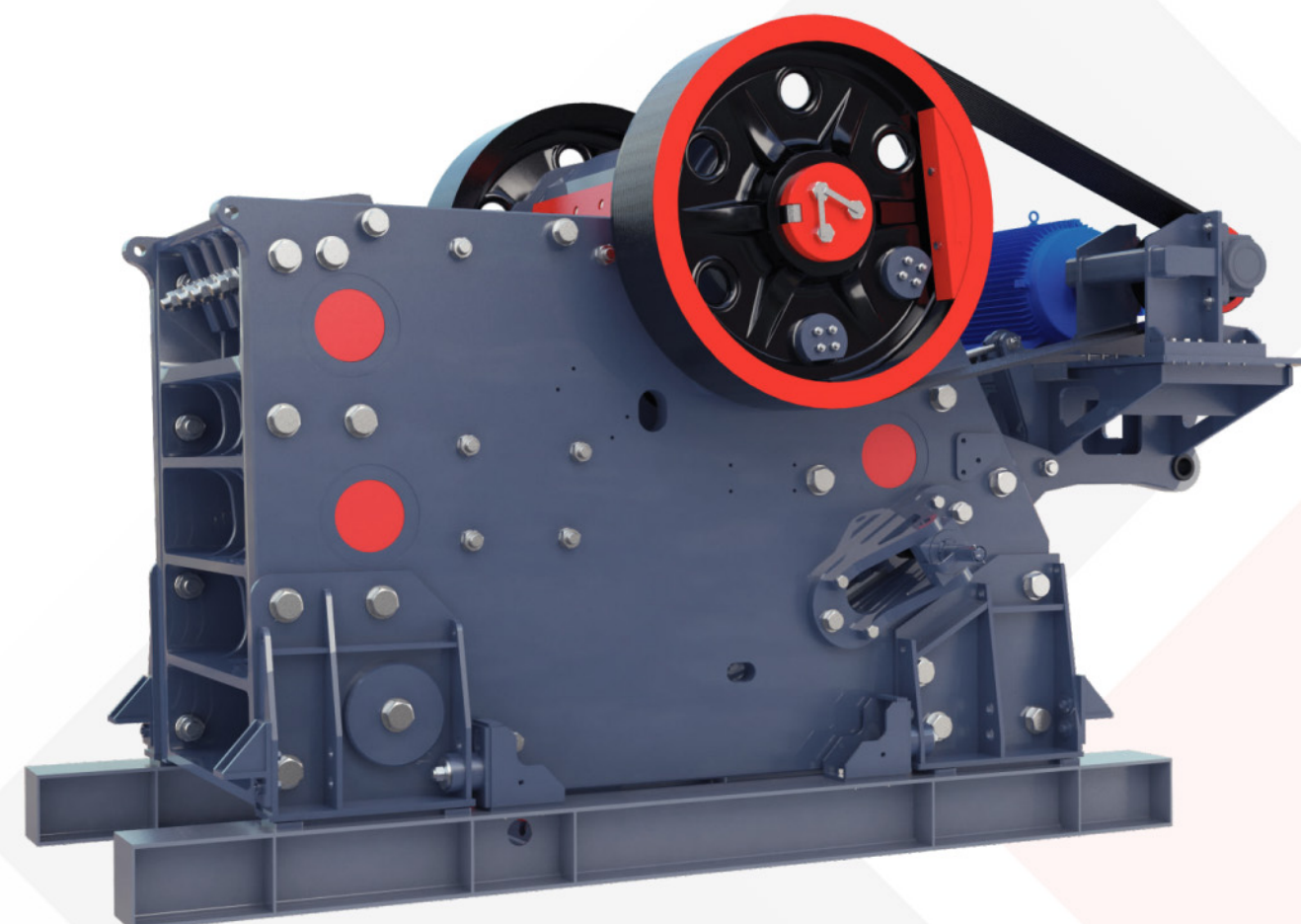




C6X SERIES JAW CRUSHER

C6X系列颞式破碎机



ZHENGZHOU

Zhengzhou Kefid Mechanical Industry
Science & Technology Co., Ltd.(Headquarters)

Address: No. 169 Kexue Avenue, National HI-TECH Industrial
Development Zone, Zhengzhou, China.

Tel: 0086-371-67999255 / 67988500

Zip Code: 450001

Website: www.kefid.com

Email: sales@kefid.com



SHANGHAI

Zhengzhou Kefid Mechanical Industry
Science & Technology Co., Ltd.(Shanghai branch)

Address: No 201 Huaxiasanlu road,Pudong new distric,
Shanghai, China.

Tel: 0086-21-50471909/50591026/50458961

Zip Code: 201299

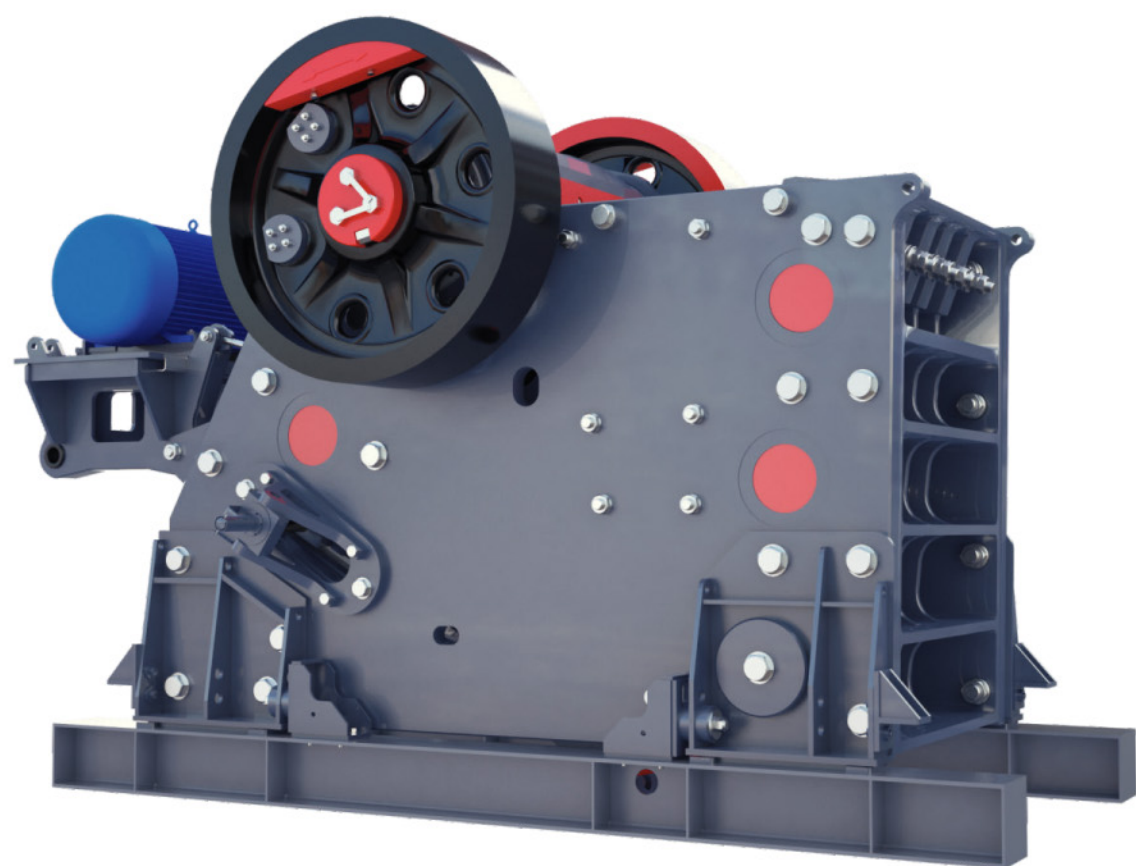
Website: www.kefidchina.com

Email: kefidsh@kefidchina.com



C6X系列颞式破碎机

C6X SERIES JAW CRUSHER



产品概述

Brief Introduction

C6X系列颞式破碎机是我公司在引进、吸收国外先进技术的基础上，根据客户现场的实际需求，采用新型的设计结构设计研发的一款新型颞式破碎机。该系列颞式破碎机拥有高效的运动性能和强劲的动力，保证了其能够在恶劣的矿山环境下高效稳定的工作，是传统颞式破碎机理想的升级替代产品。

C6X series jaw crusher is a newly designed jaw crusher, which introduces and absorbs the foreign advanced technology, and meets the clients' actual demands. C6X series jaw crusher has efficient movement performance and powerful force. It ensures efficient and stable operation in the severe mine environment, and it is the ideal upgraded machine instead of traditional jaw crusher.

产品用途及适用范围

Usage and Application

1.该破碎机主要用于冶金、矿山、化工、水泥、建筑、耐火材料及陶瓷等工业部门，是一种可作为粗碎和中碎各种中硬矿石和岩石等的设备。

C6X series jaw crusher is mainly used in metallurgy, mine, chemical industry, cement, building construction, fireproofing, ceramics, etc. It can be used as coarse crushing and intermediate crushing equipment to crush all kinds of hard ore and rocks.

2.该破碎机最适宜于破碎抗压强度不高于300Mpa的矿石、岩石、矿渣等，被破碎物料的最大尺寸不得大于技术参数表所规定。

C6X series jaw crusher is suitable for crushing ore, rocks and slag and other materials whose compressive strength is below 300Mpa. The maximum feeding size of the material should not be larger than the requirement in the technical parameter table.

产品特点

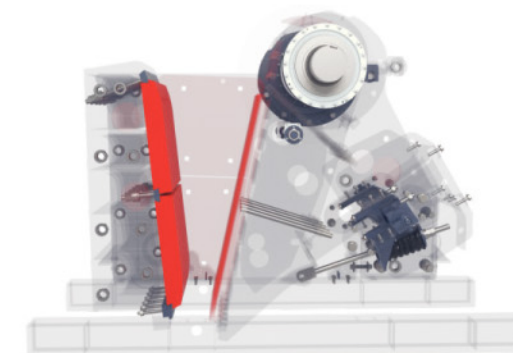
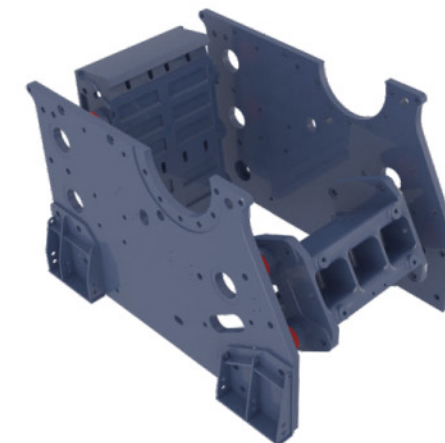
Features

1.机体结构可靠性高。机架采用侧墙、前后墙分离设计，通过高强度螺栓固定取代以往的焊接机架，避免了因焊接带来的应力集中问题，使结构更加紧凑可靠，且受损的主要零部件可实现更换操作，使破碎机的寿命大大提高。

High reliability of frame structure. Separating design of side wall, front and back wall. High-strength bolt fastening replaces previous welding frame, it avoids stress concentration problem caused by welding, and make the structure much more tight and reliable. The main wearing parts can be replaced, which prolongs crusher's service life.

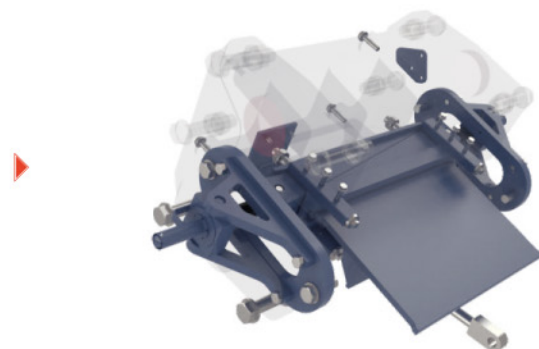
2.破碎效率高。通过对破碎腔型结构和动颞运动轨迹参数的优化，合理的惯性矩和更大的破碎冲程，使C6X系列颞式破碎机在相同能耗下破碎效率更高。

High crushing efficiency. Optimized crushing cavity structure and movable jaw movement trail parameter, reasonable inertia moment and larger crushing travel make C6X series jaw crusher crush in higher efficiency at the same energy consumption.



3.调整更便捷。楔块调整取代传统的垫板式排料口调整,使排料口调整操作更简单、高效和安全。

Convenient adjustment. Wedge adjustment replaces traditional base plate adjustment, makes the adjustment of discharge opening much more easy, efficient, and safe.



4.高制作标准。选用国际顶级制造商提供的关键零部件(标配SKF或FAG轴承、KTR联轴器);侧板及前、后墙板通过数控龙门铣床加工,保证加工精度;机架采用销轴连接,实现快速拆装,提高装配标准,确保设备的使用稳定性。

High manufacture standard. Its main parts are from international top-level supplier (standard configuration SKF or FAG bearing, KTR coupling); side plate, front and back wall are processed by CNC planer type milling machine, which ensures machining precision. Axis pin connecting frame makes dismounting quickly, improve dismounting standard and ensure its working stability.

5.独特减震设计。采用弹性限位块和橡胶减震装置替代刚性地脚联接,有效的吸收震动峰值载荷,从而降低了破碎机与基础之间的相互冲击,提高破碎机使用寿命。

Unique vibration damping design. It adopts elasticity stop block and rubber damping device replace rigidity foundation connection, which absorbs the peak of vibration load. It reduces mutual impact between crusher and foundation, which prolongs crusher's service life.



6.安装、调节方便。一体化的电机座设计,电机座固定安装在破碎机上,减小了安装空间。销轴铰接皮带张紧方案使动力传输的更稳定,调节更方便。

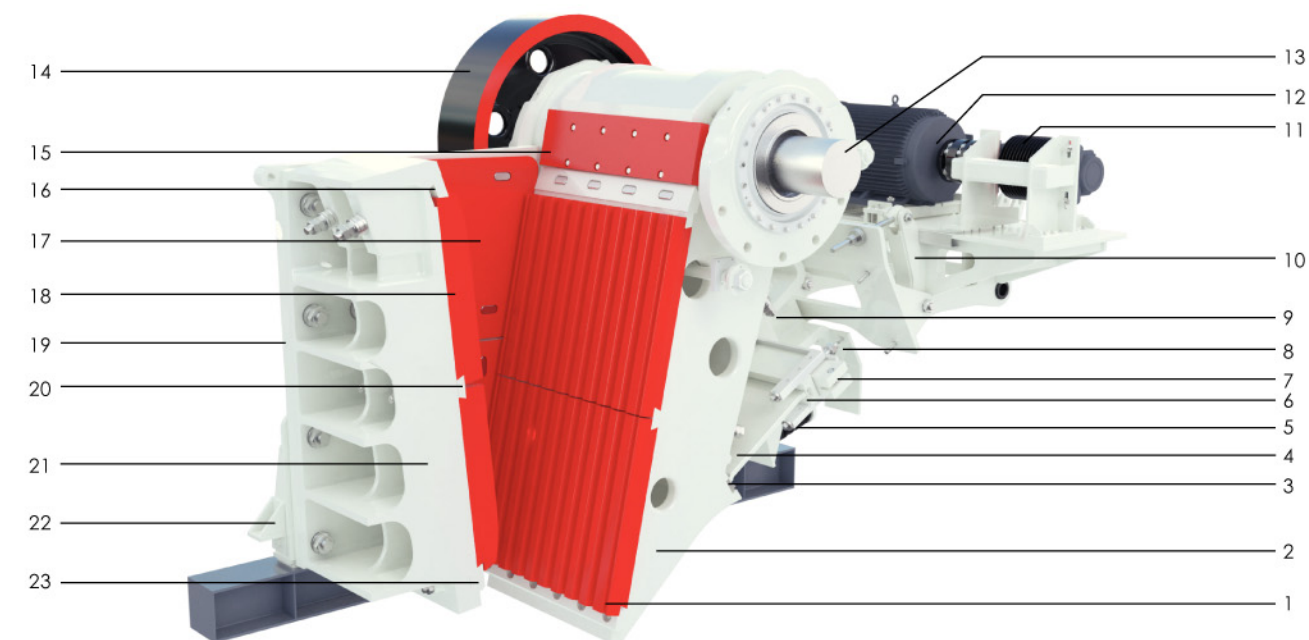
Convenient installation and adjustment. Integrative design of motor base. Motor base is fixed on the stone crusher, which saves installation space. Pin hinge joint makes the belt in the tension, which lead to more stable power transmission and convenient adjustment.



主要结构及工作原理 Main structure and working principle

C6X系列颚式破碎机以电机驱动作为动力来源,电机通过三角带将动力输入给皮带轮,皮带轮带动偏心轴转动来驱动动颚体作前后上下摆动,当动颚板靠近定颚板运动时,破碎腔体积减小,破碎腔内的物料被挤压或被劈碎,当动颚板远离定颚板运动时,破碎腔体积变大,破碎腔内被破碎的小块物料从排料口被排出,以此作连续循环运动,实现破碎作业。

The electrical motor transmits power to the eccentric shaft through v-belt and belt pulley, driving the movable jaw move upwards and downwards. This movement would trigger the toggle plate to push the movable jaw forwards and backwards. When the Movable jaw moves forth toward the fixed jaw, materials in the crushing cavity will be squashed or chopped. And then the movable jaw travels back, the chopped or squashed materials which meets the requirement will be discharged from the outlet. Since the motor keeps working, the crusher will crush and discharge periodically to achieve mass production.



1.动颚板 movable jaw plate 2.动颚 movable jaw assembly 3.肘板垫 toggle plate seat 4.肘板 toggle plate 5.弹簧 spring 6.调整座 adjusting base 7.调整楔块 adjusting wedge 8.弹簧护板 spring guard plate 9.后墙 rear frame 10.电机座 motor seat 11.电机轮 motor pulley 12.电机 motor 13.偏心轴 eccentric shaft 14.飞轮 flywheel 15.动颚护板 movable jaw guard plate 16.上楔块 upper pressing wedge 17.边护板 side guard plate 18.定颚板 fixed jaw plate 19.侧墙板 side frame 20.中间压铁 middle pressing wedge 21.前墙 front frame 22.支架 supporting base 23.颚板下挡块 bottom wedge

主要技术参数
Main Technical Parameters

型号 Model	进料口尺寸 Feed opening (mm)	最大进料尺寸 Maximum feeding size (mm)	排料口调整范围 CSS min-max (mm)	处理能力 Capacity(tph)	功率 Power KW(HP)	外形尺寸 (长×宽×高) Dimension (L×W×H) (mm)	重量 Weight (t)
C6X110	850x1100	720	80-200	160-550	160(220)	3570x2330x2550	30.5
C6X125	950x1250	800	100-250	240-760	160(220)	3900x2750x2780	45
C6X145	1100x1450	940	125-275	320-950	200(270)	4400x3060x3210	65
C6X160	1200x1600	1000	150-300	420-1100	250(350)	5700x3650x3550	86
C6X200	1500x2000	1280	175-300	620-1500	400(540)	6500x3990x4260	145



型号 Model		C6X110	C6X125	C6X145	C6X160	C6X200
给料口长度 Feed opening length(mm)		1100	1250	1450	1600	2000
给料口宽度 Feed opening width(mm)		850	950	1100	1200	1500
电机动率 Power (Kw)		160	160	200	250	400
转速 Rotation (rpm)		230	220	220	220	200
尺寸Size		产能Capacity				
产品尺寸 Output size(mm)		吨/小时 t/h	吨/小时 t/h	吨/小时 t/h	吨/小时 t/h	吨/小时 t/h
		紧边排料口 CSS(mm)				
0-105		70				
0-120		80	160-240			
0-135		90	180-260			
0-150		100	200-280	240-340		
0-185		125	250-360	280-410	320-470	
0-225		150	300-430	340-480	370-550	420-610
0-260		175	340-490	370-550	430-630	470-700
0-300		200	380-550	420-620	480-710	530-790
0-340		225		470-690	540-790	590-880
0-375		250		520-760	600-870	650-970
0-410		275			660-950	700-1060
0-450		300				750-1100
						1000-1500

该表显示的产量随系统参数和原料性能的改变而改变。The capacity changes according to system parameter and raw material.

